



Edition : 5.0  
Date: (02/26)

## Instruction Manual

# SWIVEL CRANE - Truck or Ute TCS-907

Order Code: (A354)

MACHINE	<input type="text" value="SWIVEL CRANE - TRUCK/UTE"/>
MODEL NO.	<input type="text" value="TCS-907"/>
SERIAL NO.	<input type="text"/>
DATE OF MANF.	<input type="text"/>

DISTRIBUTED BY



[www.machineryhouse.com.au](http://www.machineryhouse.com.au)

[www.machineryhouse.co.nz](http://www.machineryhouse.co.nz)



**NOTE:**

In order to see the type and model of the machine, please see the specification plate. Usually found on the back of the machine. See example (Fig.1)

<b>PRODUCT SPECIFICATIONS</b>	
Model: TCS-907	Nett Weight: 79.3kg
Capacity: WLL 900Kg	MFG Date:
Serial No:	<input type="text"/>
<small><a href="http://www.machineryhouse.com.au">www.machineryhouse.com.au</a>    <a href="http://www.machineryhouse.co.nz">www.machineryhouse.co.nz</a> Made in China</small>	

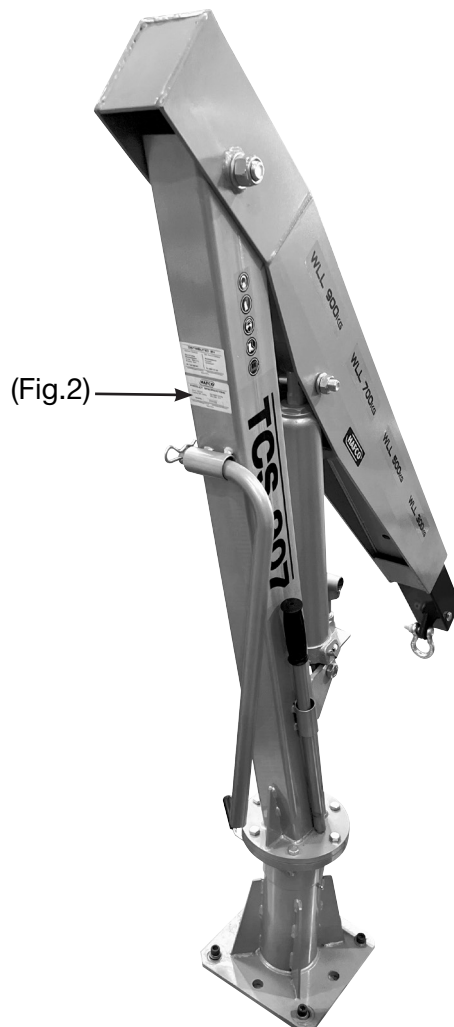
(Fig.1)

## 2.0 SPECIFICATIONS

These cranes accept a wide variety of engines and transmissions and can also be used to lift machines or other heavy items. This TCS-907 swivel crane has an 3-tonne long stroke lifting ram with a single acting pump. The jib extends to four different positions with the desired lifting capacity of 300kg, 500kg, 700kg or 900kg and secured by a single locking pin. The swivel base provides 360° continuous manual rotation and includes a locking lever.

<b>Max. Load Capacity .....</b>	<b>900kg</b>
Lifting Capacity Position 1 .....	900kg
Lifting Capacity Position 2 .....	700kg
Lifting Capacity Position 3 .....	500kg
Lifting Capacity Position 4 .....	300kg
Max. Lift Height Position 1 .....	1880mm
Max. Lift Height Position 4 .....	2150mm
Nett Weight .....	88kg

(Full load capacity rating is also on the specification plate on the swivel crane (Fig. 2))



### **WARNING**

**DO NOT** use this machine unless you have been instructed in its safe use and operation and have read and understood this manual. It is the responsibility of the owner to make sure all personnel read this manual prior to using the device. It is also the responsibility of the device owner to keep this manual intact and in a convenient location for all to see and read. If the manual or product labels are lost or not legible, they need to be replaced before operating.

### **THE NATURE OF HAZARDOUS SITUATIONS WARNING!**

The use of portable automotive lifting and support device is subject to certain hazards that cannot be prevented by mechanical means, but only by the exercise of intelligence, care, and common sense. It is therefore essential to have owners and personnel involved in the use and operation of the equipment who are careful, competent, trained, and qualified in the safe the operation of the equipment and its proper use. Examples of hazards are dropping, tipping or slipping of loads caused primarily by improperly securing loads, overloading, off-centered loads, use on other than hard level surfaces, and using equipment for a purpose for which it was not designed.

### **METHODS TO AVOID HAZARDOUS SITUATIONS WARNING!**

- Read, study, understand and follow all instructions before operating this device.
- User and bystanders must wear eye protection that meets the Australian and New Zealand standards.
- Inspect the swivel crane before each use. Do not use if damaged, altered, modified, in poor condition, or has loose or missing hardware or components. Take corrective action before using the swivel crane.
- Do not overload. Overloading could cause damage to the swivel crane.
- Never use this crane on a hill or incline as this could result in the crane tipping over.
- Always lock the jib in position before lifting a load.
- The nuts and bolts supplied with the crane are all high strength and should not be substituted for inferior types.
- Before each use ensure that all the nuts and bolts are correctly fitted and tight.
- Never exceed the safe working loads indicated on the jib.
- Only attachments and/or adapters supplied by the manufacturer should be used.
- Do not use the crane to dolly or transport engine.
- Do not crawl under load or place any part of your body under load at any time.
- Always use proper lifting points & mounting points and approved lifting slings and chains.

### **CONSEQUENCES OF NOT AVOIDING HAZARDOUS SITUATIONS WARNING!**

Failure to read this manual completely and thoroughly, failure to understand its OPERATING INSTRUCTIONS, SAFETY WARNINGS, MAINTENANCE INSTRUCTIONS and comply with them, could cause accidents resulting in serious or fatal personal injury and/or property damage.



### **ENVIRONMENT PROTECTION**

Recycle unwanted materials instead of disposing of them as waste. All tools, accessories and packaging should be sorted, taken to a recycling centre and disposed of in a manner which is compatible with the environment. When the product becomes completely unserviceable and requires disposal, drain any fluids (if applicable) into approved containers and dispose of the product and fluids according to local regulations.

**SETUP INSTRUCTIONS**

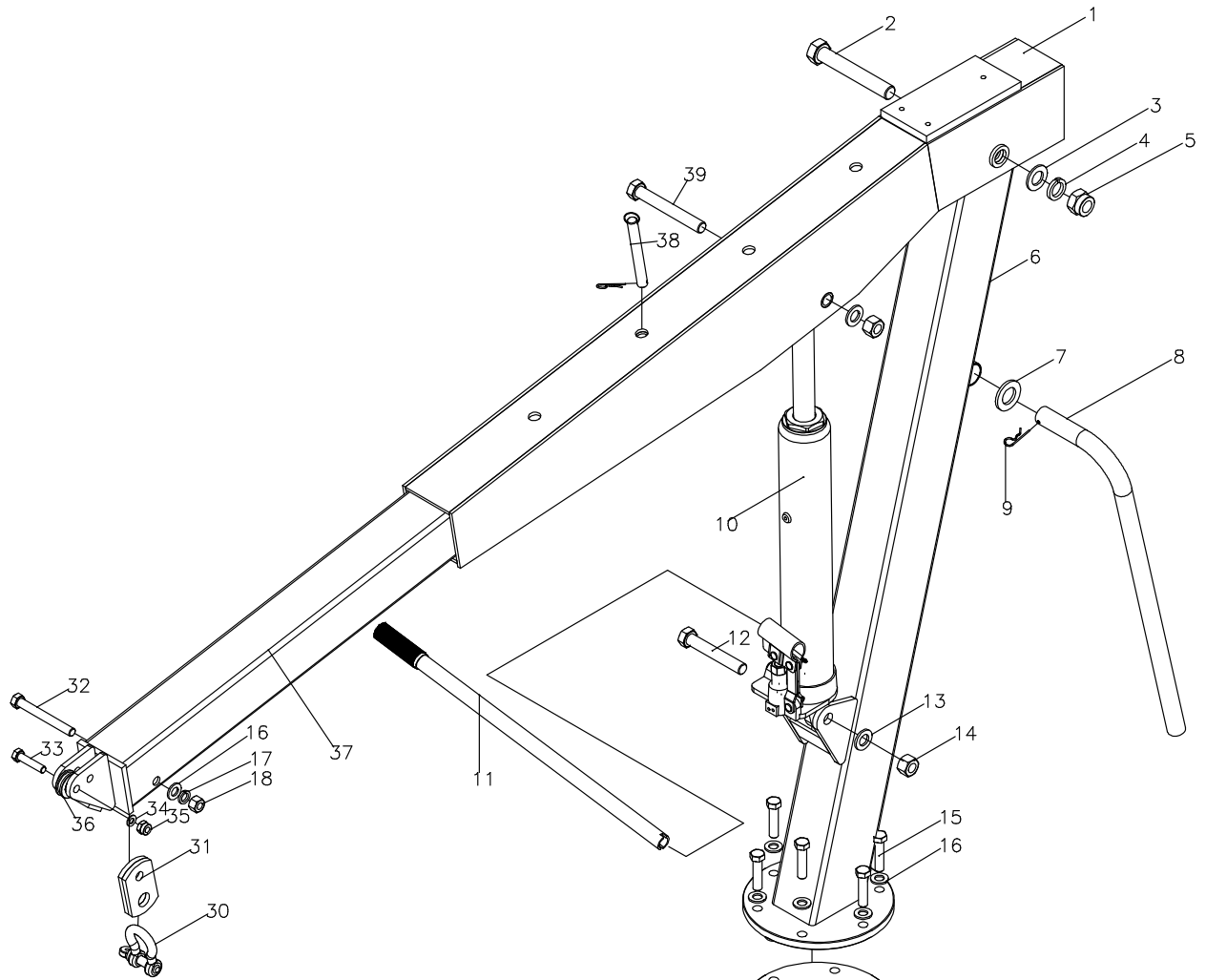
*This safety warning is used for the SETUP INSTRUCTIONS section of this manual to alert you to potential personal injury hazards. Obey all instructions to avoid possible injury or death.*

- Do not exceed the maximum swivel cranes load rating.
- Load must be directly under the swivel crane before lifting. Only use approved lifting chains & slings. Before lifting any load, always apply the handbrake and use wheel chocks to prevent vehicle from rolling. Keep as much of your body as possible out from underneath the load when using the swivel crane. Prevent pinching by releasing pressure in the ram leaving boom all the way down when not in use.

**PREVENTATIVE MAINTENANCE**

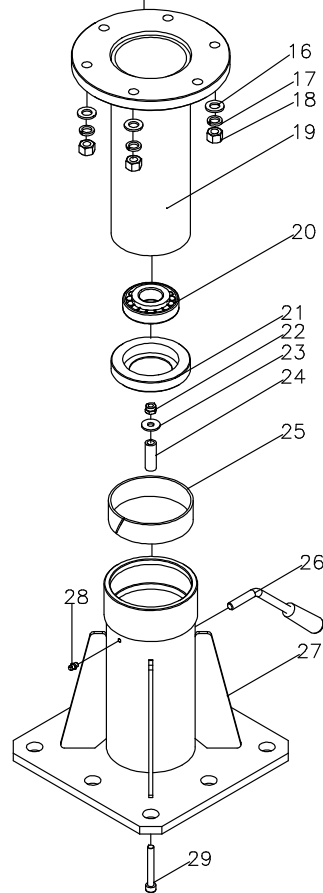
1. Always store the swivel crane in a well protected area where it will not be exposed to inclement weather, corrosive vapors, abrasive dust, or any other harmful elements. The swivel crane must be cleaned of water, snow, sand, grit, oil, grease or other foreign matter before using.
2. Lubricate the swivel base with a general purpose grease.
3. Every swivel crane owner is responsible for keeping the swivel crane label clean and readable. Use a mild soap solution to wash the external surfaces of the stand.
4. Inspect the crane before each use. Do not use the crane if any component is cracked, broken or bent. Do not use the crane if it has loose or missing hardware or components, or is modified in any way. Take corrective action before using the crane again.

# 5.0 PARTS LIST - DIAGRAM



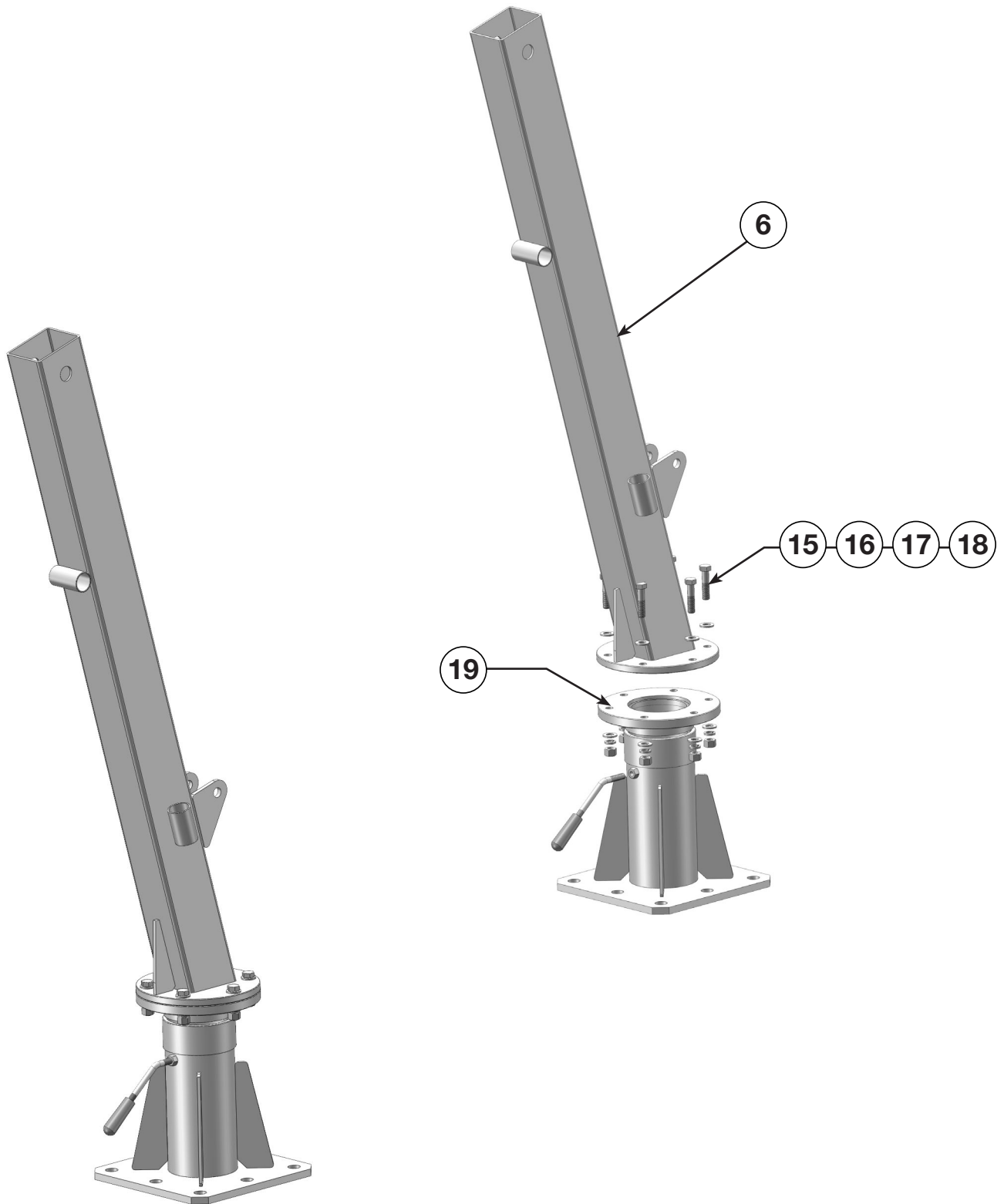
Part No.	Description	Qty
1	Boom	1
2	Bolt M20x130mm	1
3	Washer 20mm	1
4	Spring Washer 20mm	1
5	Nut M20	1
6	Main Post	1
7	Washer 25mm	1
8	Handle	1
9	R-Pin	2
10	Jack	1
11	Jack Handle	1
12	Bolt M16x100mm	1
13	Washer 16mm	2
14	Nut M16	2
15	Bolt M12x50mm	6
16	Washer 12mm	14
17	Spring Washer 12mm	7
18	Nut M12	7
19	Turntable	1
20	Bearing	1

Part No.	Description	Qty
21	Bearing Seat	1
22	Lock Nut M8	1
23	Washer 8mm	1
24	Bushing	1
25	Guiding Ring	1
26	Locking Bolt	1
27	Base	1
28	Oil Bolt	1
29	Screw M8x60mm	1
30	Bow Shaped Shackle	1
31	Connection Board	2
32	Bolt M12x100mm	1
33	Bolt M10	2
34	Washer 10mm	2
35	Nut M10	2
36	Roller	1
37	Boom Extension	1
38	Pin	1
39	Bolt M16x120mm	1



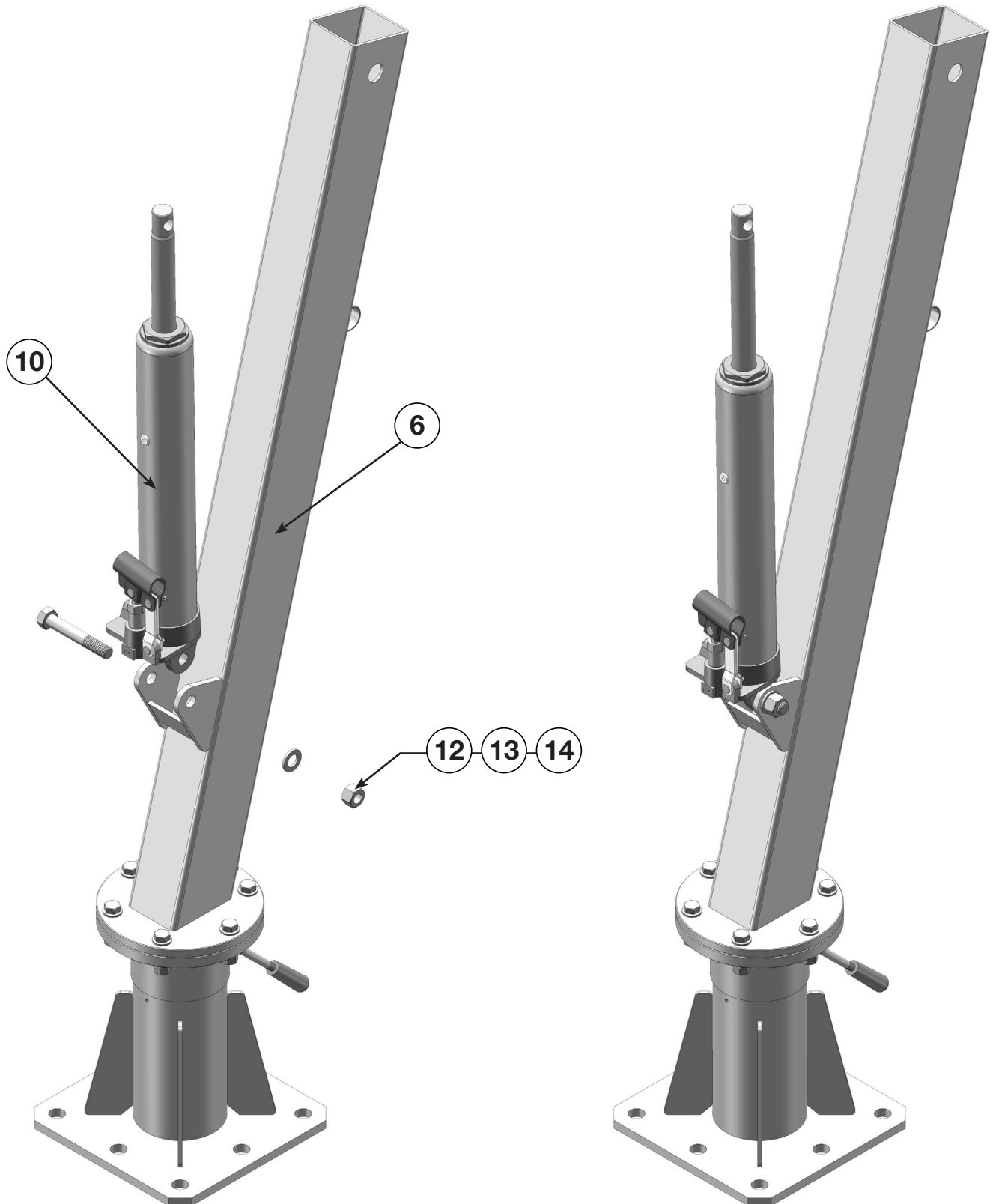
**6.0 ASSEMBLY INSTRUCTIONS****6.0**

Bolt the Main Post (6) to the Turntable (19) using Bolts M12x50mm (#15), Washers (#16), Spring Washers (#17) and Nuts M12 (#18) as shown.



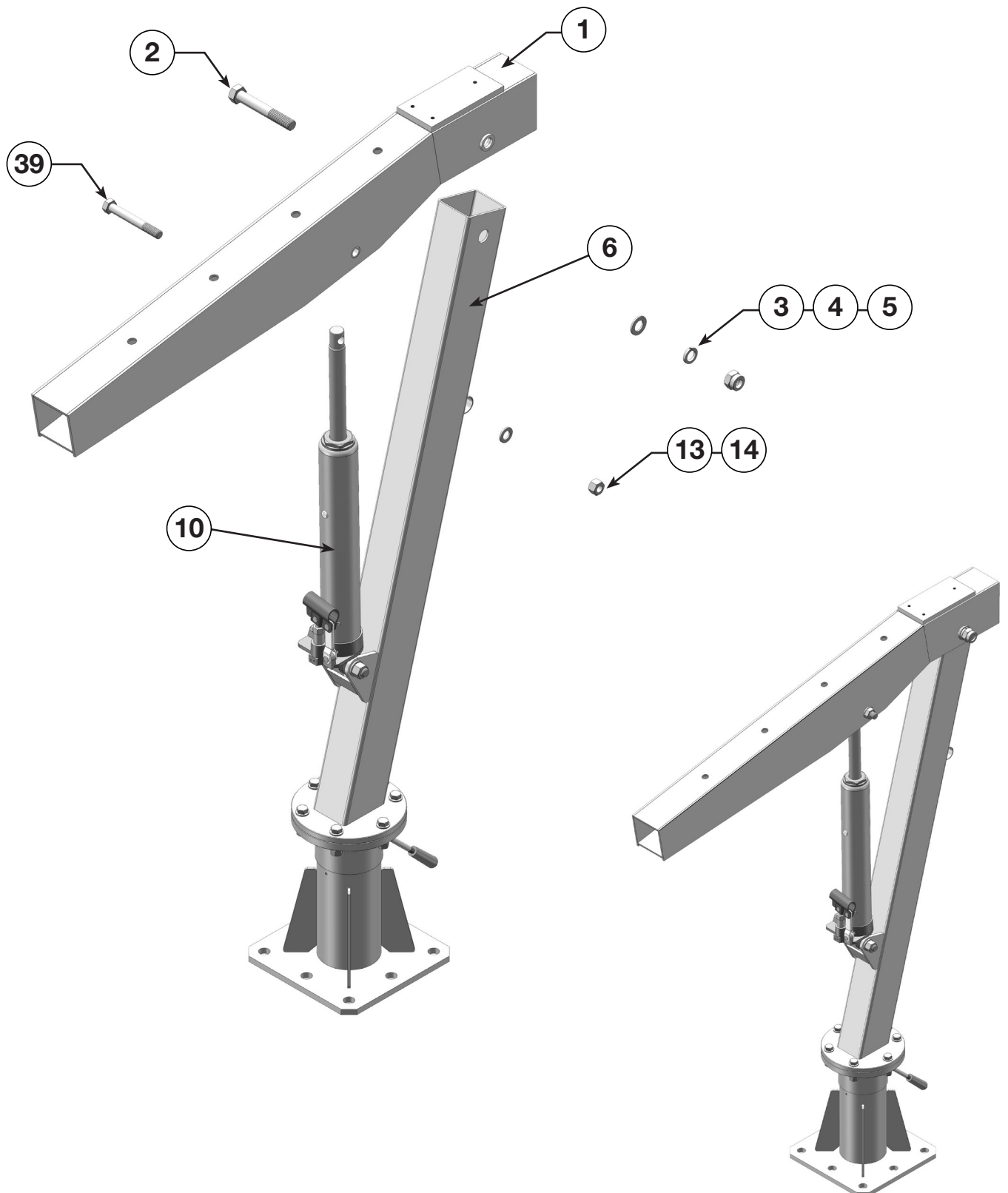
6.1

Attach Jack (#10) to mounting bracket on Main Post (#6) using a Bolt M16x100mm (#12), Washer 16mm (#13) and Nut M16 (#14) as shown.



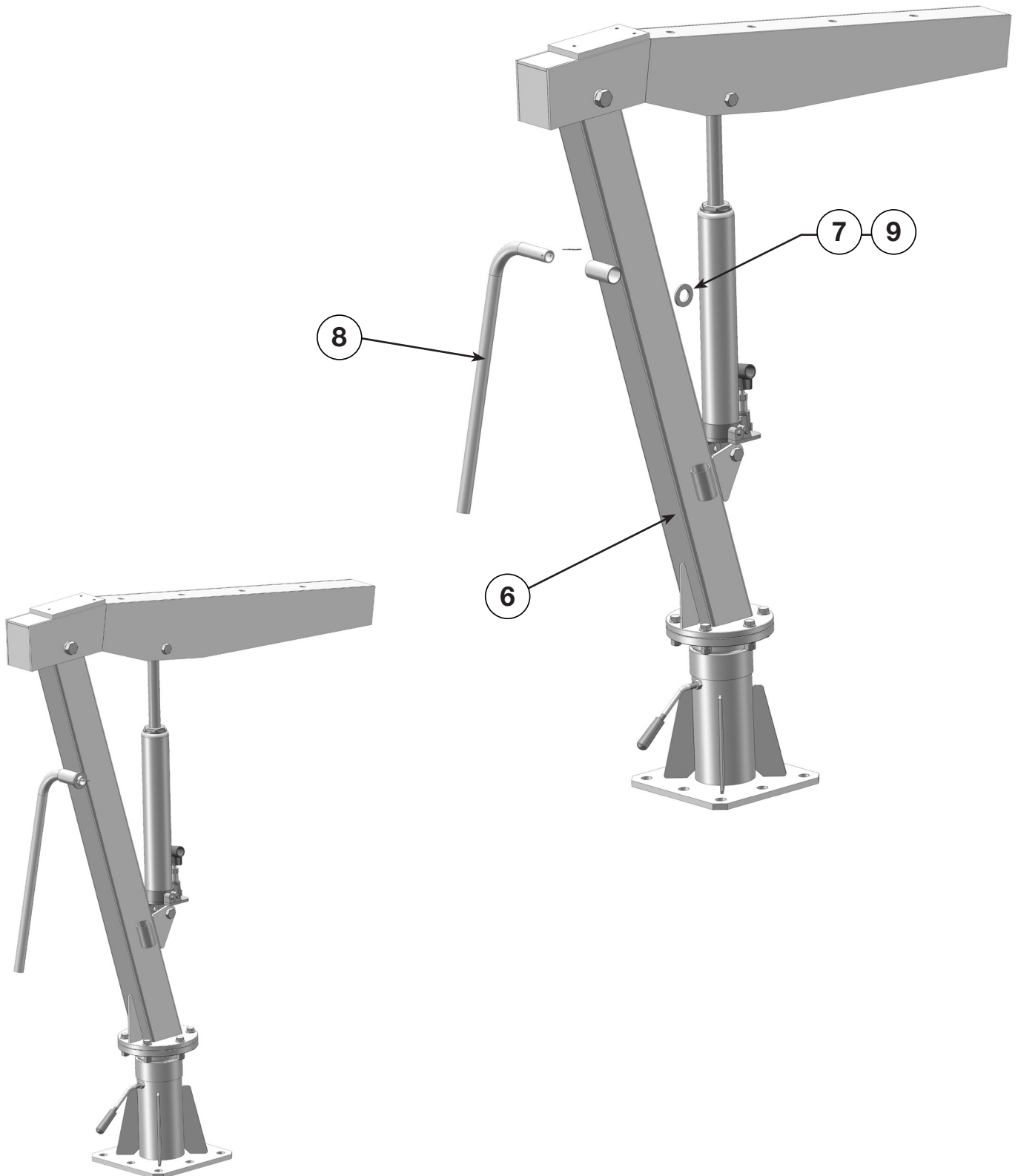
**6.0 ASSEMBLY INSTRUCTIONS****6.2**

Attach the Boom (#1) to the Main Post (#6) and slide a Bolt M12x130mm (#2) through the locating holes and secure with a Washer (#3), Spring Washer (#4) and Nut M12 (#5) as shown. Then Attached the Boom (#1) to the Jack (#10) via the locating holes as shown with a Bolt M16x120mm (#39) and secure with a Washer 16mm (#13) and Nut M16 (#14).



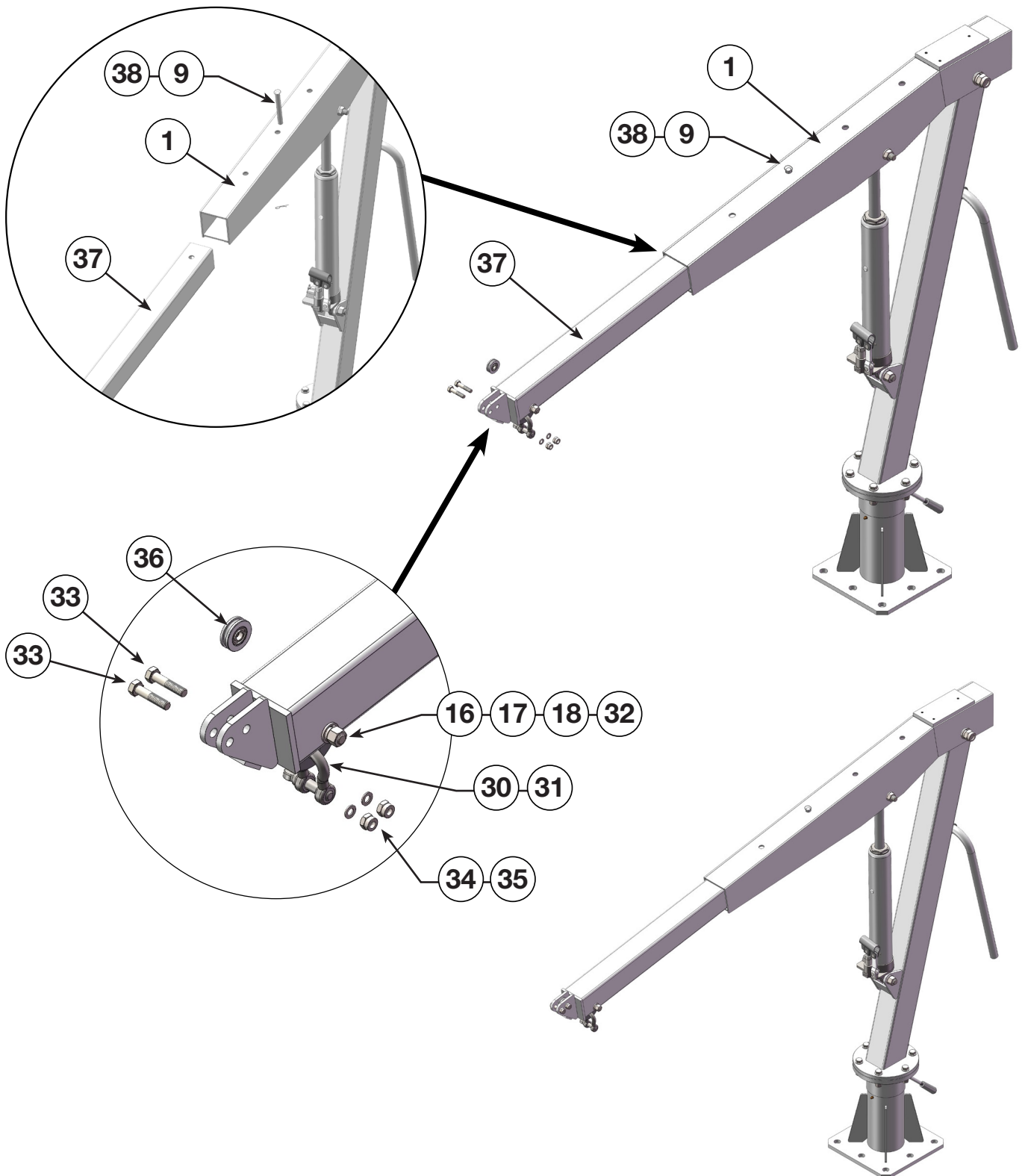
**6.3**

Attach the Handle (#8) to the Main Post (#6) and secure with a Washer 25mm (#7) and R-Pin (#9) as shown.



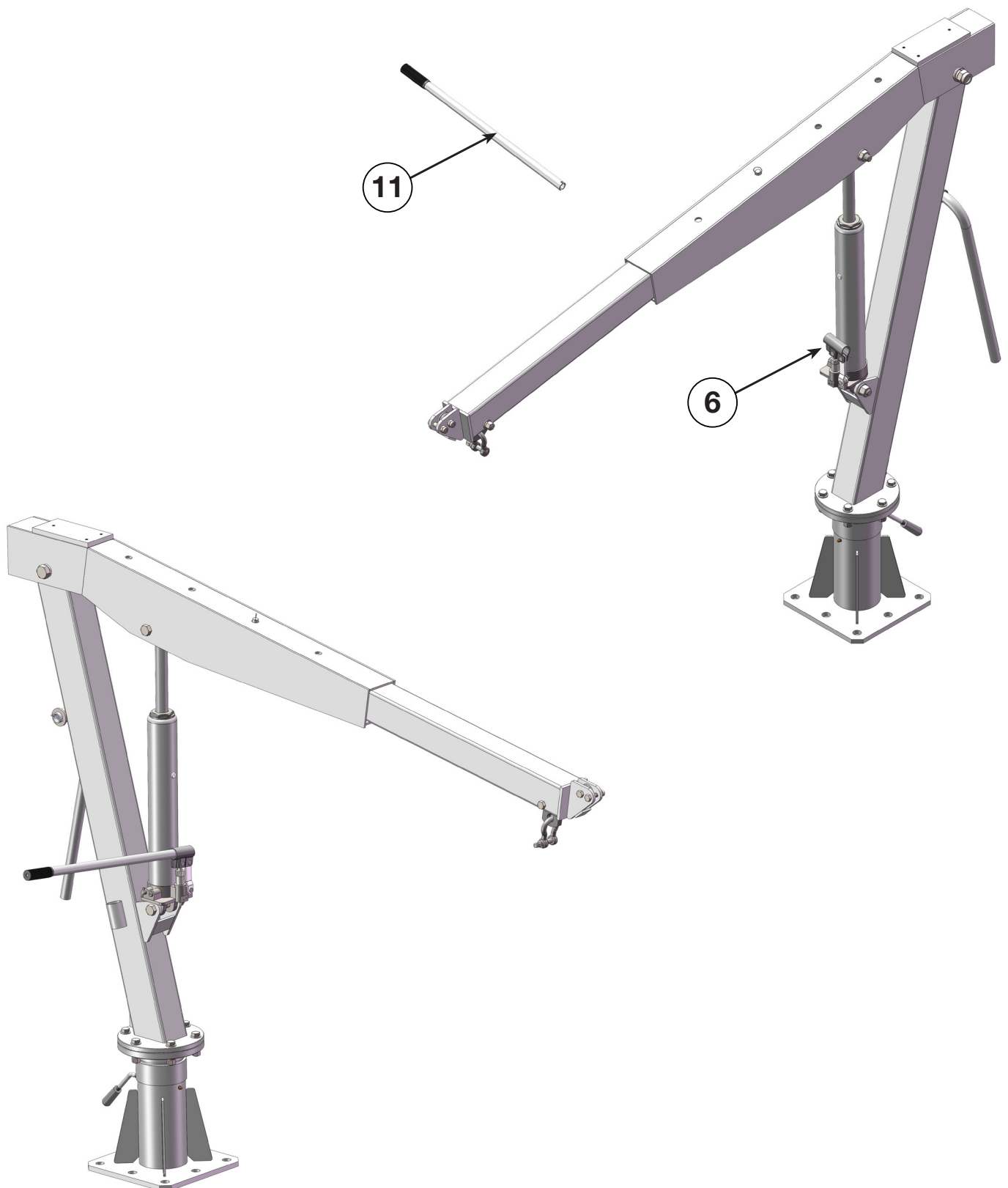
6.4

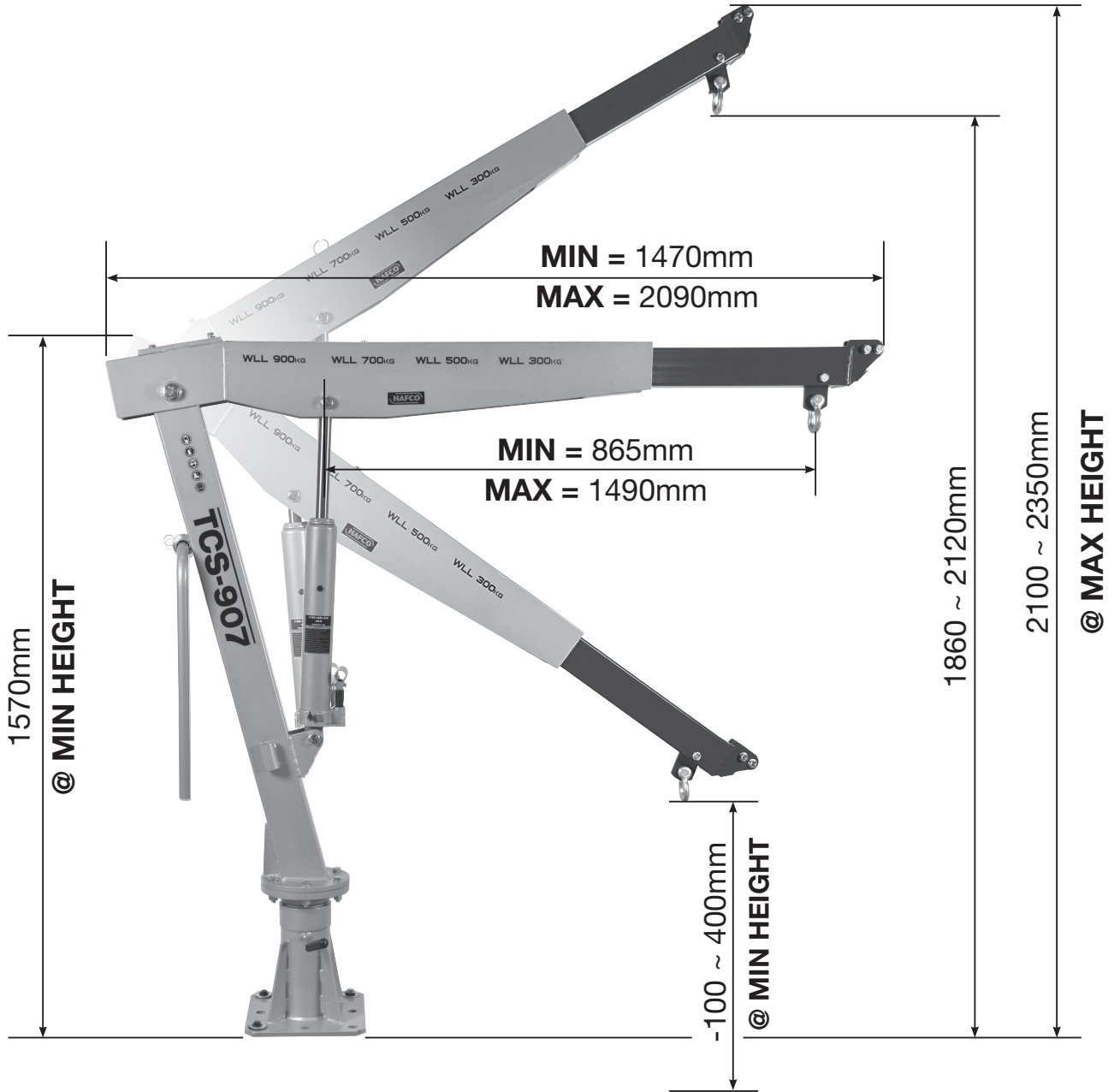
Slide Boom Extension (#37) into Boom (#1) to the desired lifting position, while aligning the holes, insert the Pin (#38) and secure with R-Pin (#9) as shown. Attach the Connection Board (#31) to end of the Boom Extension (#37) with the Bolt M12x100mm (#32), Washer 12mm (#16), Spring Washer 12mm (#17) and Nut 12mm (#18). Then attach the Bow Shaped Shackle (#30). Install the Roller (#36) using Bolt M10 (#33), Washer 10mm (#34) and Nut M10 (#35). Then attached Bolt M10 (#33), Washer 10mm (#34) and Nut M10 (#35) as shown below.

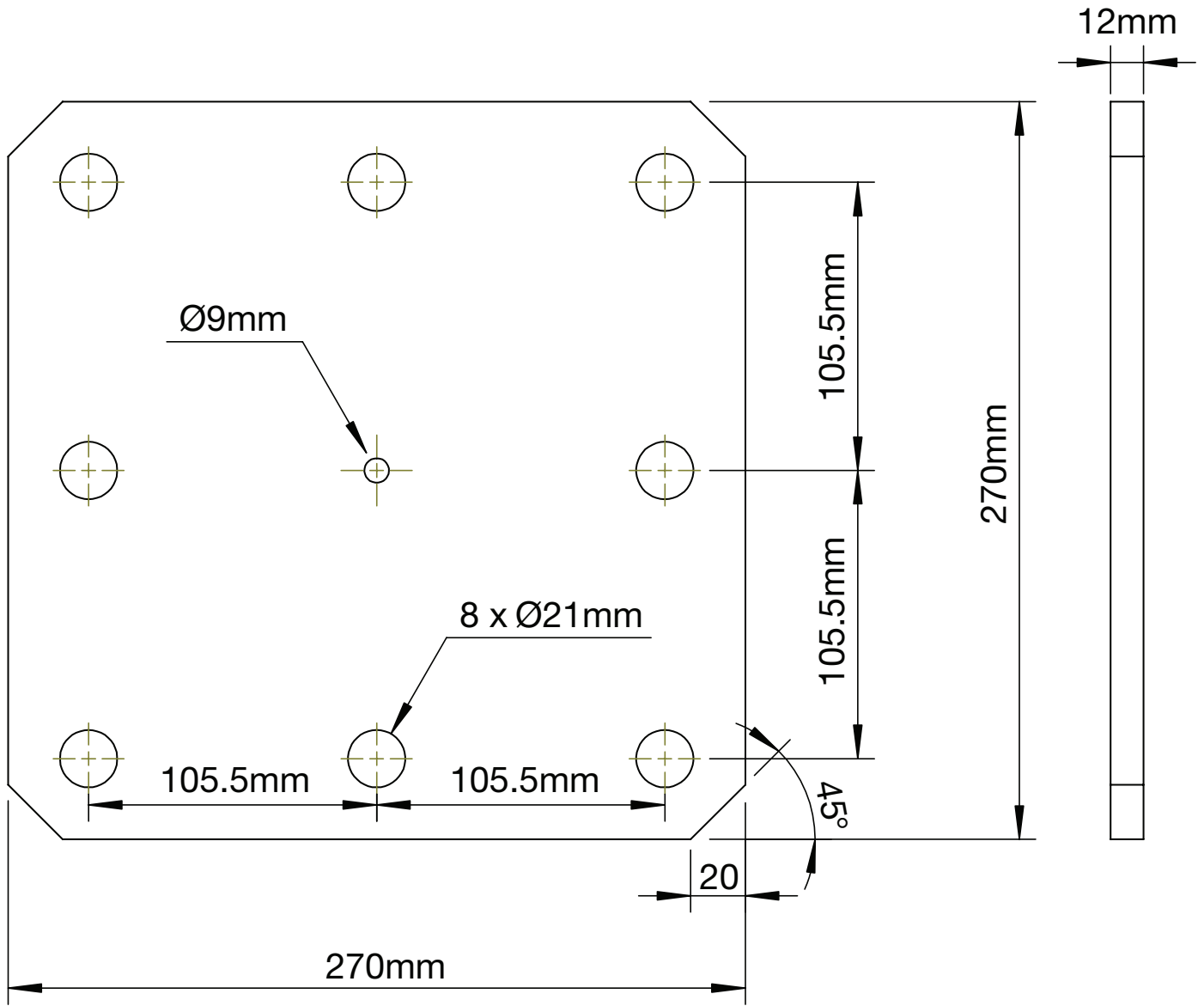


### 6.5

Insert the Jack Handle (#11) into pump housing of the Jack (#6) as shown ready for use.











### **ENVIRONMENT PROTECTION**

Recycle unwanted materials instead of disposing of them as waste. All tools, accessories and packaging should be sorted, taken to a recycling centre and disposed of in a manner which is compatible with the environment. When the product becomes completely unserviceable and requires disposal, drain any fluids (if applicable) into approved containers and dispose of the product and fluids according to local regulations.

Imported by

---

**HARE & FORBES**  
**MACHINERYHOUSE**

Australian Distributor

**Hare & Forbes**  
**Machineryhouse**  
Sydney - Melbourne  
Adelaide - Brisbane - Perth

**Ph: 1300 202 200**  
**[www.machineryhouse.com.au](http://www.machineryhouse.com.au)**

**MACHINERYHOUSE**

New Zealand Distributor

**Machineryhouse**  
Auckland  
Christchurch

**Ph: 0800 142 326**  
**[www.machineryhouse.co.nz](http://www.machineryhouse.co.nz)**